

Investor Information

Kuraray Co., Ltd.

(As of March 31, 2007)

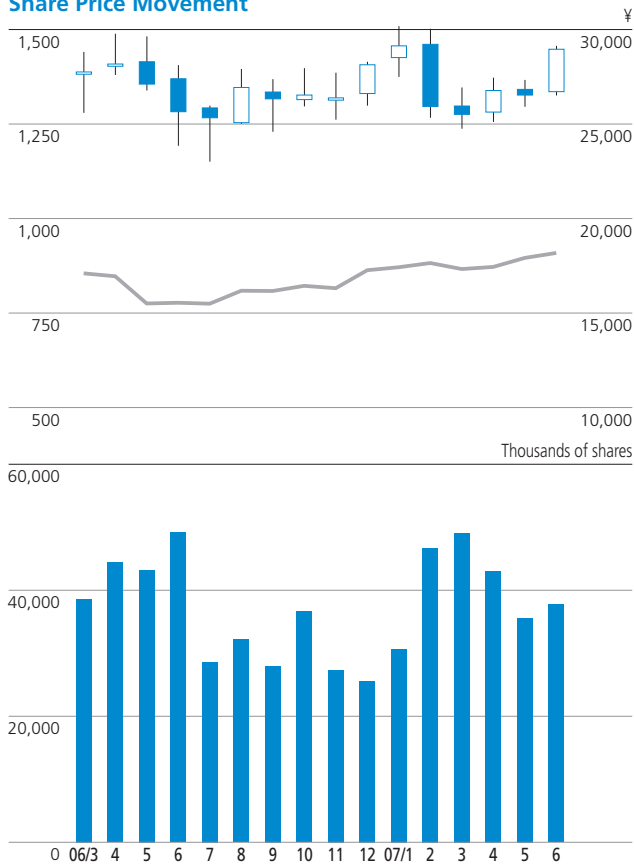
KURARAY CO., LTD.

Established: June 24, 1926
 Capital: ¥88,955 million
 Shares Authorized: 1,000,000,000 shares
 (as of June 28, 2006)
 Issued: 382,863,603 shares
 Number of Shareholders: 29,117

Offices, Laboratories, and Plants

Head Offices: Tokyo, Osaka
 Offices: Fukuoka, Shanghai (China)
 Research Laboratories: Kurashiki, Tsukuba,
 Pasadena (Texas)
 Plants: Kurashiki, Saijo, Okayama,
 Niigata, Kashima

Share Price Movement



Share prices according to the market price on the Tokyo Stock Exchange

High Closing High Opening
 Low Opening Low Closing
 — Nikkei Stock Average (right scale) ■ Volume

Shareholder Register Agent for Common Stock

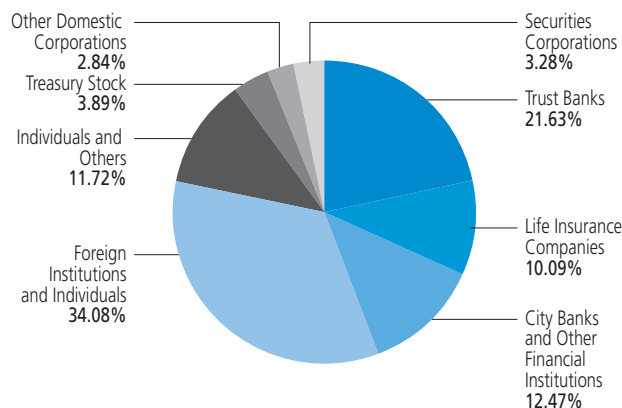
The Sumitomo Trust And Banking Co., Ltd.
 4-5-33, Kitahama, Chuo-Ku, Osaka 540-8639, Japan

Principal Shareholders

Name or company name	Number of Shares Held (thousands)	Percentage of Shares Held
Japan Trustee Services Bank, Ltd. (Trust Account)	23,805	6.22%
The Master Trust Bank of Japan, Ltd. (Trust Account)	23,426	6.12%
The Chase Manhattan Bank, NA London	21,382	5.58%
National Mutual Insurance Federation of Agricultural Cooperatives	13,695	3.58%
Nippon Life Insurance Company	12,061	3.15%
Mellon Bank Treaty Clients Omnibus	8,326	2.17%
Meiji Yasuda Life Insurance Company	8,066	2.11%
Japan Trustee Services Bank, Ltd. (Trust Account 4)	8,014	2.09%
BNP Paribas Securities (Japan) Ltd.	7,919	2.07%
Mizuho Corporate Bank, Ltd.	7,396	1.93%
State Street Bank and Trust Company	6,998	1.83%

Notes: Kuraray Co., Ltd holds 14,877,167 shares of treasury stock.

Breakdown of Issued Shares by Type



KURARAY CO., LTD.

TOKYO HEAD OFFICE

Ote Center Bldg., 1-1-3, Otemachi,
Chiyoda-ku, Tokyo 100-8115, Japan
tel. +81-3-6701-1000 fax. +81-3-6701-1005

OSAKA HEAD OFFICE

Shin-Hankyu Bldg., 1-12-39, Umeda,
Kita-ku, Osaka 530-8611, Japan
tel. +81-6-6348-2111 fax. +81-6-6348-2165



made from 100% elemental chlorine free (ECF) pulp.
