

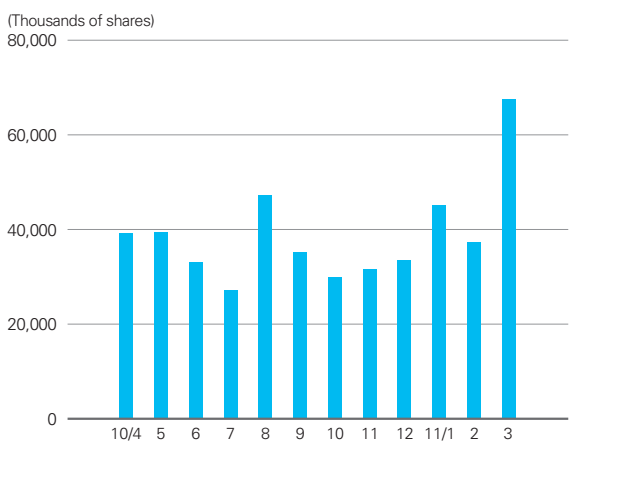
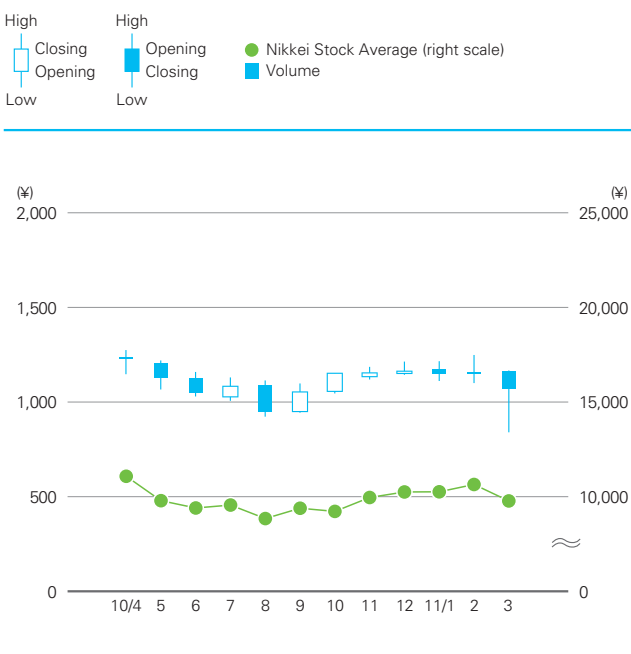
# Investor Information

## KURARAY CO., LTD.

Established: June 24, 1926  
 Capital: ¥88,955 million  
 Shares Authorized: 1,000,000,000 shares  
 Issued: 382,863,603 shares  
 Number of Shareholders: 30,743  
 Head Offices: Tokyo, Osaka

## Share Price Movement

Share prices according to the market price on the Tokyo Stock Exchange (left scale)



## Shareholder Register Agent for Common Stock

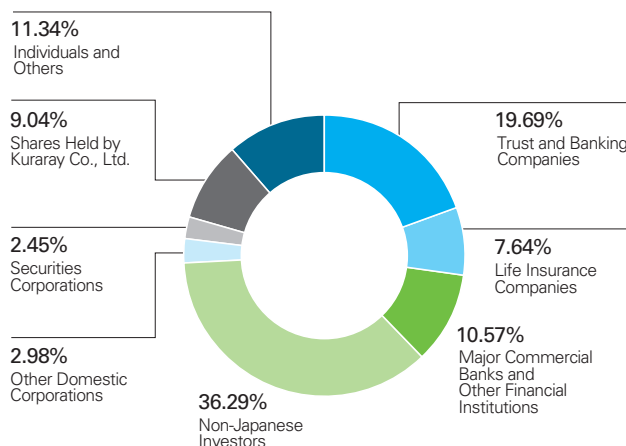
The Sumitomo Trust and Banking Co., Ltd.  
 Stock Transfer Agency Department  
 1-4-4, Marunouchi, Chiyoda-ku, Tokyo, Japan

## Principal Shareholders

Name or Company Name	Number of Shares Held (thousands)	Percentage of Shares Held
Japan Trustee Services Bank, Ltd. -Trust Account-	23,602	6.16%
The Master Trust Bank of Japan, Ltd. -Trust Account-	20,571	5.37%
National Mutual Insurance Federation of Agricultural Cooperatives	13,695	3.57%
Nippon Life Insurance Company	13,061	3.41%
SSBT OD05 OMNIBUS ACCOUNT -TREATY CLIENTS-	6,927	1.80%
Meiji Yasuda Life Insurance Company	6,453	1.68%
STATE STREET BANK -WEST PENSION FUND CLIENTS- EXEMPT	5,792	1.51%
MELLON BANK TREATY CLIENTS OMNIBUS	5,397	1.40%
MELLON BANK, N.A. AS AGENT FOR ITS CLIENT MELLON OMNIBUS US PENSION	4,820	1.25%
The Nomura Trust and Banking Company, Limited	4,623	1.20%

Note: Although the Company owns 34,611,169 shares of treasury stock, it is excluded from the major shareholders listed above.

## Breakdown of Issued Shares by Type of Shareholder



(As of March 31, 2011)