

Investor Information

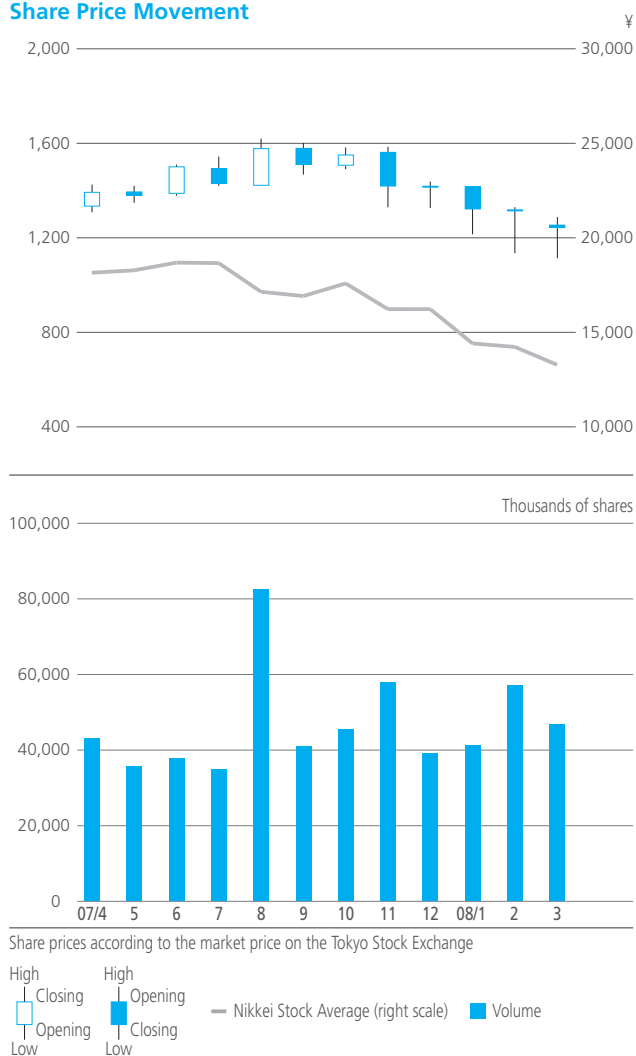
KURARAY CO., LTD.

Established: June 24, 1926
 Capital: ¥88,955 million
 Shares Authorized: 1,000,000,000 shares
 Issued: 382,863,603 shares
 Number of Shareholders: 27,679

Offices, Laboratories, and Plants

Head Offices: Tokyo, Osaka
 Offices: Fukuoka, Shanghai (China)
 Research Laboratories: Kurashiki, Tsukuba, Pasadena (Texas)
 Plants: Kurashiki, Saijo, Okayama, Niigata, Kashima

Share Price Movement



Shareholder Register Agent for Common Stock

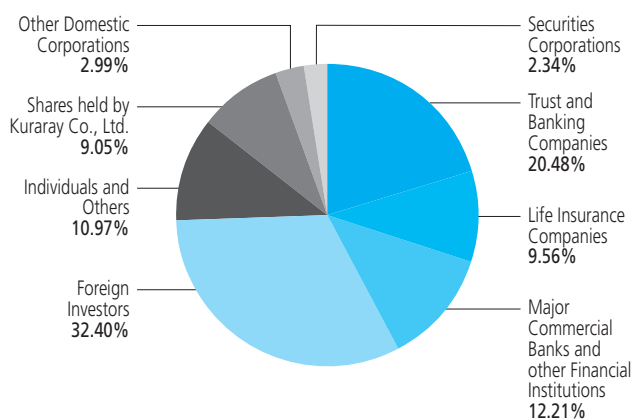
The Sumitomo Trust and Banking Co., Ltd.
 4-5-33, Kitahama, Chuo-Ku, Osaka 540-8639, Japan

Principal Shareholders

Name or company name	Number of Shares Held (thousands)	Percentage of Shares Held
Japan Trustee Services Bank, Ltd. (Trust Account)	26,717	6.98%
The Master Trust Bank of Japan, Ltd. (Trust Account)	18,355	4.79%
National Mutual Insurance Federation of Agricultural Cooperatives	13,695	3.58%
Nippon Life Insurance Company	13,061	3.41%
Meiji Yasuda Life Insurance Company	8,066	2.11%
Mizuho Corporate Bank, Ltd.	7,396	1.93%
State Street Bank and Trust Company	7,183	1.88%
BNP PARIBAS Securities (Japan) Limited	6,734	1.76%
Japan Trustee Services Bank, Ltd. (Trust Account 4)	6,408	1.67%
State Street Bank and Trust Company (505103)	5,391	1.41%

Note: Kuraray Co., Ltd holds 34,642,074 shares of treasury stock.

Breakdown of Issued Shares by Type



(As of March 31, 2008)

KURARAY CO., LTD.

TOKYO HEAD OFFICE

Ote Center Bldg., 1-1-3, Otemachi,
Chiyoda-ku, Tokyo 100-8115, Japan
tel. +81-3-6701-1000 fax. +81-3-6701-1005

OSAKA HEAD OFFICE

Shin-Hankyu Bldg., 1-12-39, Umeda,
Kita-ku, Osaka 530-8611, Japan
tel. +81-6-6348-2111 fax. +81-6-6348-2165



made from 100% elemental chlorine free (ECF) pulp.