

INVESTOR INFORMATION

Kuraray Co., Ltd. and Its Consolidated Subsidiaries
As of March 31, 2006

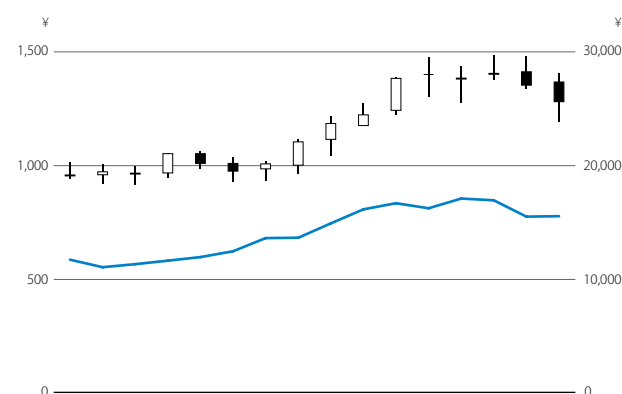
KURARAY CO., LTD.

Established: June 24, 1926
Capital: ¥88,955 million
Shares Authorized: 1,000,000,000 shares (as of June 28, 2006)
Issued: 382,863,603 shares
Number of Shareholders: 29,660

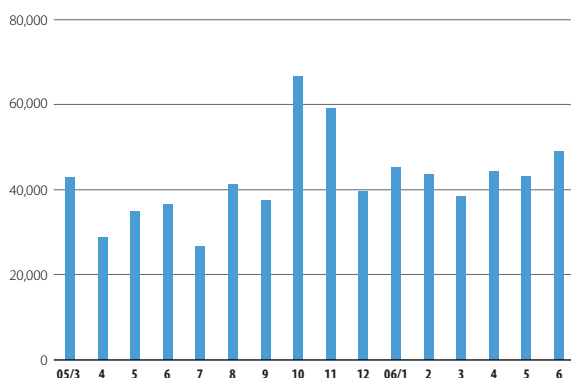
OFFICES, LABORATORIES, AND PLANTS

Head Offices: Tokyo, Osaka
Offices: Fukuoka, Shanghai (China)
Research Laboratories: Kurashiki, Tsukuba, Pasadena (Texas)
Plants: Kurashiki, Saijo, Okayama, Niigata, Kashima

SHARE PRICE MOVEMENT



Thousands of shares



Share prices according to the market price on the Tokyo Stock Exchange

High Opening High Opening Black: opening price > closing price
Low Closing Low Closing White: closing price > opening price

— Nikkei Stock Average (right scale)
■ Volume

SHAREHOLDER REGISTER AGENT FOR COMMON STOCK

The Sumitomo Trust and Banking Co., Ltd.
Stock Transfer Agency Department
4-5-33, Kitahama, Chuo-ku, Osaka 540-8639, Japan

PRINCIPAL SHAREHOLDERS

Principal Shareholders	Number of Shares Held (thousands)	Percentage of Shares Held
The Chase Manhattan Bank, NA London	29,162	7.62%
Japan Trustee Services Bank, Ltd. (Trust Account)	21,571	5.63%
The Master Trust Bank of Japan, Ltd. (Trust Account)	20,980	5.48%
National Mutual Insurance Federation of Agricultural Cooperatives	13,695	3.58%
Nippon Life Insurance Company	12,061	3.15%
Mellon Bank Treaty Clients Omnibus	9,133	2.39%
Meiji Yasuda Life Insurance Company	8,066	2.11%
Mizuho Corporate Bank, Ltd.	7,395	1.93%
BNP Paribas Securities (Japan) Limited	6,944	1.81%
State Street Bank and Trust Company	6,164	1.61%

Note: Kuraray Co., Ltd. holds 14,455,500 shares of treasury stock.

BREAKDOWN OF ISSUED SHARES BY TYPE

